

EEC

CONSULTING

ENGINEERING EXCELLENCE

SUSTAINING PROJECTS



SITE SERVICES



PROJECT CONTROLS





OUR TEAM - OUR MISSION

EDC Consulting delivers engineering and project management services to the resources sector. We have a solid track record of adding value to our clients' businesses through the delivery of sustaining projects, providing a range of site services and engineering support. Our team of industry experts delivers over 20 years of experience to provide effective and efficient client focussed consultancy services.



Our highly skilled team has successfully delivered medium-large capital projects for leading companies in the resources sector. We are highly versed in all aspects of project controls and engineering design requirements.

We have a robust track record in partnering with clients to understand your needs and to provide seamless, fit-for-purpose project controls solutions, specifically detailed engineering support and design solutions, planning, and cost engineering.

Our comprehensive knowledge of mining and port supply chains, material handling, coupled with our specialised team based in Western Australia enables EDC to be nimble and responsive when working for clients.

E: admin@edcconsulting.com.au

T: 1300 072 909



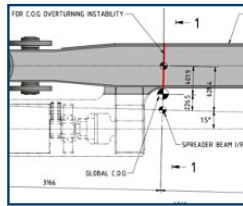


UNDERSTANDING YOUR NEEDS

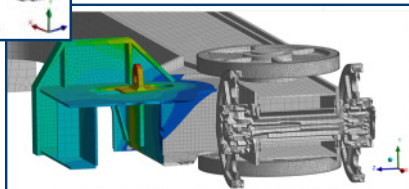
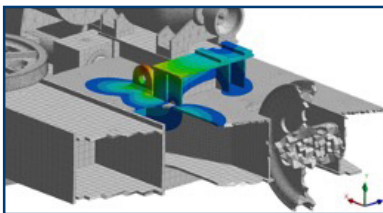
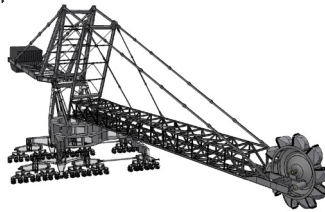
EDC Consulting delivers a wide range of services including but not limited to:

DETAILED ENGINEERING SUPPORT

- Mechanical Engineering & Design
- Structural Engineering & Design
- Civil Engineering & Design
- E, I & C Engineering & Design
- Rail Engineering & Design
- Industrial Machines, Machine Designs & EOL Assessments
- On-site Structural/Mechanical Inspection & Dilapidation Reporting
- Fluid Dynamics & Congugate Heat Transfer
- Finite Element Analysis (FEA)
- Installation & Lift Studies



Our team of EDC Engineers have highly experienced in-house capability of DEM and FEA modelling, (*Struct/Mech, FEA, Fatigue, CFD, Heat Transfer, RC Structures, Geotechnical Eng*). This provides us with the capacity to perform site audits, inspections, advanced anaylsis, detailed design and site assistance covering fabrication, installation, site support, commissioning and handover to site operations.



We utilise industry standard design tools including **AutoCAD, Mircostation, Inventor, ANSYS, SpaceGass, Strand7, Idea Statica, Sidewinder** and a range of other specialist software tools to produce designs, 3D models and construction drawings depending on project needs and client requirements.

Our E, I & C team is capable of detailed design and engineering of a large variety of brown and greenfield projects, designing for sustainability and safety.

- Project and system reviews (PowerFactory Modelling etc)
- Audits (Standards compliance, obsolesence, system failures, energy efficiency, reliability, functional safety.
- Specialist studies (instrumentation selection and design, network design, equipment failure analysis, option selection, lighting, load flow, network and protection, equipment life extension and maintenance.
- Site green/redline as building and upgrade designs.
- Site services (including secondment of senior personnel, constrcution assistance and commissioning).



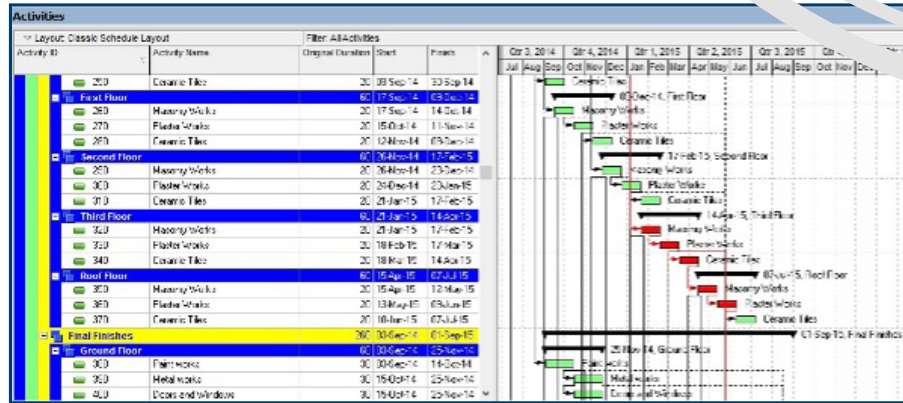


UNDERSTANDING YOUR NEEDS

EDC Consulting delivers a wide range of services including but not limited to:

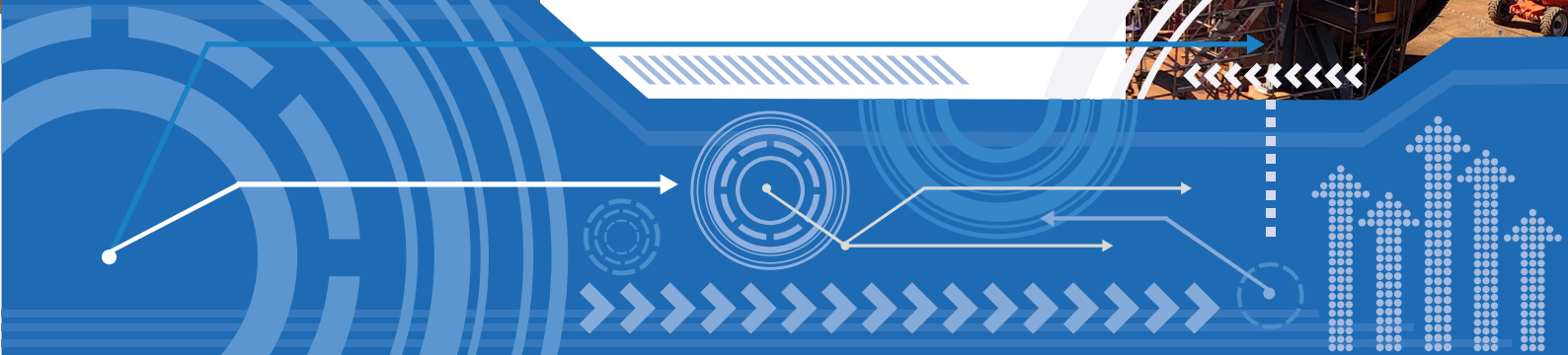
PROJECT CONTROLS

- Project Controls Management
- WBS Structure and Coding
- Project Planning & Scheduling
- Estimating
- Cost Control
- Change Management
- Document Control
- Risk Management



PROJECT EXECUTION

- Study Phase Management
- Project Management
- Project Engineers
- Supervisors
- HSE Officers
- Project Secondments
- Commissioning Management





DELIVERING OUTCOMES SAFELY

EDC is committed to a flexible and accomodating work/life balance for all of our employees and contractors.

We are committed to our people and strive to have constant communcation with all our team members. We encourage our contractors and employees to be actively involved in personal and professional goal setting and Key Performance Indicators (KPI's).

At EDC we are committed to the elimination of work related injuries and illnesses through the provision of training, leadership, resources, processes, education and a demonstrated commitment to our workplace health and safety policy.

Our objective is to create a culture and environment that ensures we identify and mitigate risks to the natural environment and community heritage through the provision of resources, processes and education.

➤ LEADERSHIP

- Alignment with client
- Leader comittment
- Accountability - personal, team and company
- Culture - behaviour
- Leading by example

➤ SYSTEMS

- Risk Management
- H&S Standards
- Safety in Design
- Client Safety
- Training
- Improvement - Lessons learned
- Governance - performance monitoring, audits, action tracking.

➤ BEHAVIOUR

- Safety comes first
- Personal commitment to safety
- Risk Awareness
- Reward and Recognition
- Feel safe, stay safe

ZERO LTI'S





A WELCOME FUTURE FOR ALL

EDC nurtures a diverse, collaborative and accountable team culture and hopes to contribute to a more sustainable and environmentally conscious future.

At EDC, we continually strive to provide a fair and diverse working environment. We recognise the benefits of having an inclusive workforce and supply chain. Diverse and inclusive teams have a positive impact on our services and help us better serve our clients.

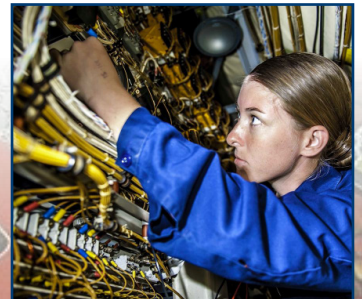
Our team is empowered to solve complex problems for our clients. Always striving to deliver lasting value to our clients and their surrounding communities where their projects are located.

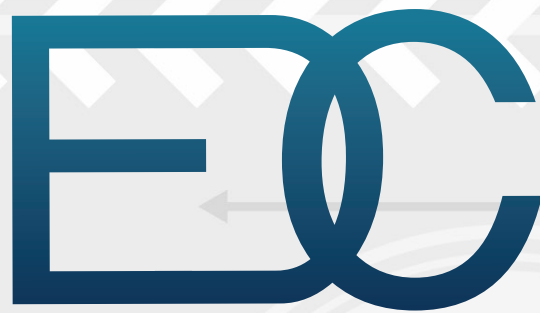
Putting a strong emphasis on empowering our people to grow and create, we are committed to gender equality and will continue building a world-class technical workforce that is balanced with a variety of perspectives, increased creativity, higher innovation, and higher engagement. We are proud of the contributions made by all our talent.

We are also committed to honouring Aboriginal and Torres Strait Island people as the first peoples of Australia, and we pay respect to elder's past, present and emerging. We acknowledge the traditional custodians of this land in which we live. We wish to acknowledge and respect their continuing culture and the contribution they make to the life of this country.

We recognise the importance of a healthy environment and embrace a positive approach to the management, conservation and restoration of land, water and biodiversity. Our environmental responsibility is to understand and avoid or minimise environmental impacts and contribute to the resilience of, and positive impact to, the natural environment where we can.

We are committed to a sustainable and prosperous future for our clients, employees, country and world.



The logo for EDC Consulting, featuring the letters 'EDC' in a bold, dark blue, sans-serif font. The 'E' and 'D' are connected at the top, and the 'C' is a simple circle. The background of the entire page is a light grey with various geometric patterns, including dashed lines, arrows, and circular motifs.

CONSULTING

CONTACT US

T: 1300 072 909

E: admin@edcconsulting.com.au

W: www.edcconsulting.com.au